

Model: E40C-490

1. Function:

E40C series is a plug and play, fully auto dry cabinet which will be stable at 40°C and $\leq 5\%RH$. It is especially designed for moisture sensitive SMD packages to comply with J-STD-033B.

There are 2 main functions:

1.1 Wider application in resetting the floor life: Moisture sensitivity SMD packages which are exposed to the air and exceed the floor life should be stored in the E40C series for resetting the floor life. (see J-STD-033B table 4-1, 4-3). For example: If MSD parts of MSD Level 4,5 and 5a are exposed for less than eight hours, they can be stored in a dry cabinet for resetting the floor life. However, if their exposure time is longer than eight hours, the SMD packages should be stored at 40°C in a E40C series to reset the floor life.

1.2 Labor saving: SMD packages shipped in low temperature carriers may not be baked in a traditional high temperature oven with the temperature higher than 40°C, as it will cause deformation of the carriers. Storing in a E40C series, operators do not need to remove the SMD package to thermally safer carriers. It saves labor cost and eliminates the chance of damaging the carriers.



2. Features:

2.1 Modular Design: This is a modularly designed dry cabinet. The main modules are display controller, power box, dehumidifier, shelf, caster wheel and cable. All of the modules can be replaced easily.

2.2 Green Design: The performance of the dry cabinet can be upgraded by just changing the modules. There will be no waste materials created to pollute the environment. The old modules can be collected and sent back to the maker. Dryzone dry cabinets can be used as long as the cabinet structure is in good condition. It means that the product life could last for 10 to 20 years.

pic 1 |

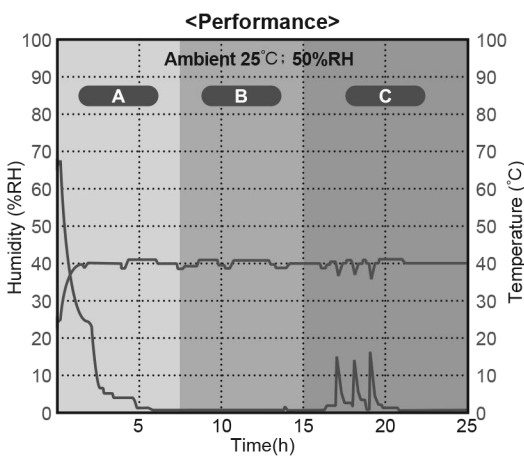
3. Specifications:

- 3.1 Temperature & Humidity Range: 40±2°C, $\leq 5\%RH$
- 3.2 External Dimension: W600*D840*H1308mm
- 3.3 Internal Dimension: W544*D576*H974mm
- 3.4 Capacity: 305L
- 3.5 Shelves: 3 shelves
- 3.6 Color: black
- 3.7 Voltage: 110V/230V (select voltage in advance)
- 3.8 Display Precision: ±1.0°C, ±3.0%RH
- 3.9 Structure: 1mm thick carbon steel with antistatic paint.
- 3.10 Door: Compression handles, airtight magnetic sealers and antistatic glass.
- 3.11 Wheel: 4 antistatic 3" wheels, two of them with brakes.
- 3.12 Grounding Wire: 1MΩ. (940mm long)
- 3.13 ESD Paint: 10⁶~10⁹Ω. (surface resistance)
- 3.14 Power Consumption: Max. 600W; Ave. 300W/h
- 3.15 Baking 40°C Dry Cabinet is suitable for ambient temperature >15°C.



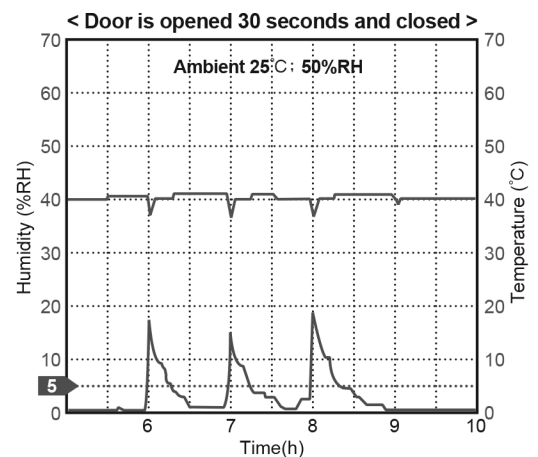
Control Panel

pic 2 |



- A Start installation
- B Stable
- C Door open and close

pic 3 |



E40C series always reach $\leq 5\%RH$ within 30 minutes after the door is opened and closed.

pic 4 |