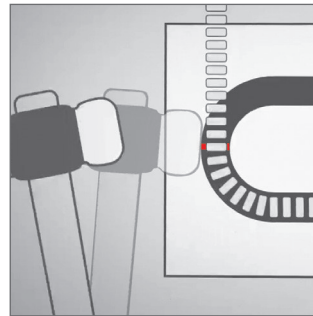


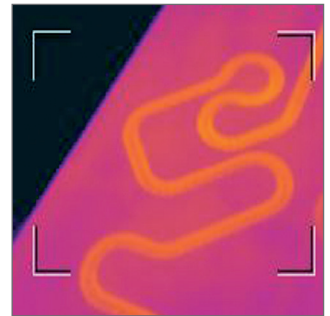
# hotflex®

## Flexible tubular heater

- Easy installation with a uniform finish
- Can be formed by hand
- Stored in a straight condition to save storage space
- No special installation tools required
- Patented technology ensures industry leading heat transfer
- Up to 75% sheath contact with round and square hotflex heaters when recommended groove geometry is followed
- Rapid heat-up times
- Minimal temperature difference between heater sheath and heated tool
- 3-dimensional groove geometry possible
- Industry's smallest bending radius
- Hotflex's flexibility enables heat to be located where it is needed; an improvement over rigid cartridge heaters
- Reduced energy costs: tool mass can be reduced



Installation without special tools



Ideal heat transfer

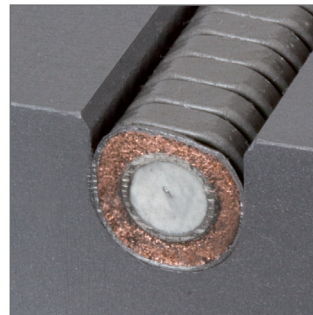
### Technical key features

Sheath material	stainless steel
Sheath temperature of heating element	max. 700 °C / 1290 °F
Standard connection voltage	230 V
High voltage test*	1000 V AC
Insulation resistance*	≥ 5 MΩ at 500 V DC
Leakage current*	< 0.5 mA at 253 V AC
Wattage tolerance	± 10%
Length tolerance	± 1.5%

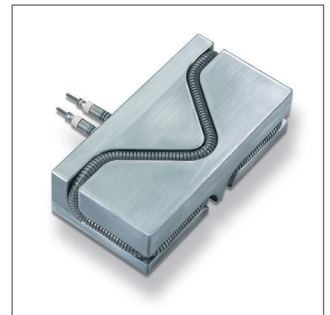
\* tested at environmental temperature

### Options

- Bendable unheated zones
- Connection voltage from 12 V to 250 V
- Individual length
- Individual wattage
- Individual connection options



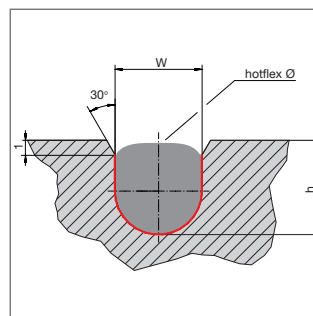
Installed, round groove geometry



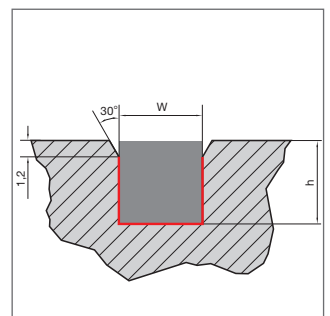
Installation example

### Recommended groove geometry

Type hotflex	Groove dimensions [mm] w x h	
□ 6.0±0.1	6.1 <sup>+0.1</sup>	7.1 <sup>+0.1</sup>
∅ 6.5±0.1	6.0 <sup>+0.1</sup>	6.5 <sup>+0.1</sup>
∅ 8.0±0.1	7.7±0.05	8.0±0.1
□ 8.0±0.1	8.1 <sup>+0.1</sup>	9.1 <sup>+0.1</sup>
∅ 8.2±0.1	7.9±0.05	8.2±0.1
∅ 8.5±0.1	8.2±0.05	8.5±0.1
∅ 10.0±0.1	9.7±0.05	10.0±0.1



Round groove geometry



Square groove geometry

<p>Ceramic terminal connector "plug'n heat" Temp. resist. 230 °C / 445 °F Short term max. 280 °C / 535 °F 14 x 21 x 25 mm / 5.51 x 8.27 x 9.84" available with stock items</p>	<p>Standard: threaded pins M2.5 Option: M4 from ∅ 8.0 mm with set of nuts and washers. Temp. resist. 350 °C / 660 °F</p>	<p>Plain Ni-leads with ceramic beads insulation, up to 600 °C / 1110 °F</p>	<p>Insulated Ni-leads Glass silk: up to 230 °C / 445 °F PTFE: up to 230 °C / 445 °F Silicon: up to 180 °C / 350 °F Option: eyelet connector M4 available with stock items</p>	<p>High temperature mineral fibre insulated Ni-leads, with ceramic sealed tube section</p>	<p>Flat plug W = 6.3 mm / 0.248 inch. Temp. resist. 350 °C / 660 °F available with stock items</p>
--	--	---	---	--	--